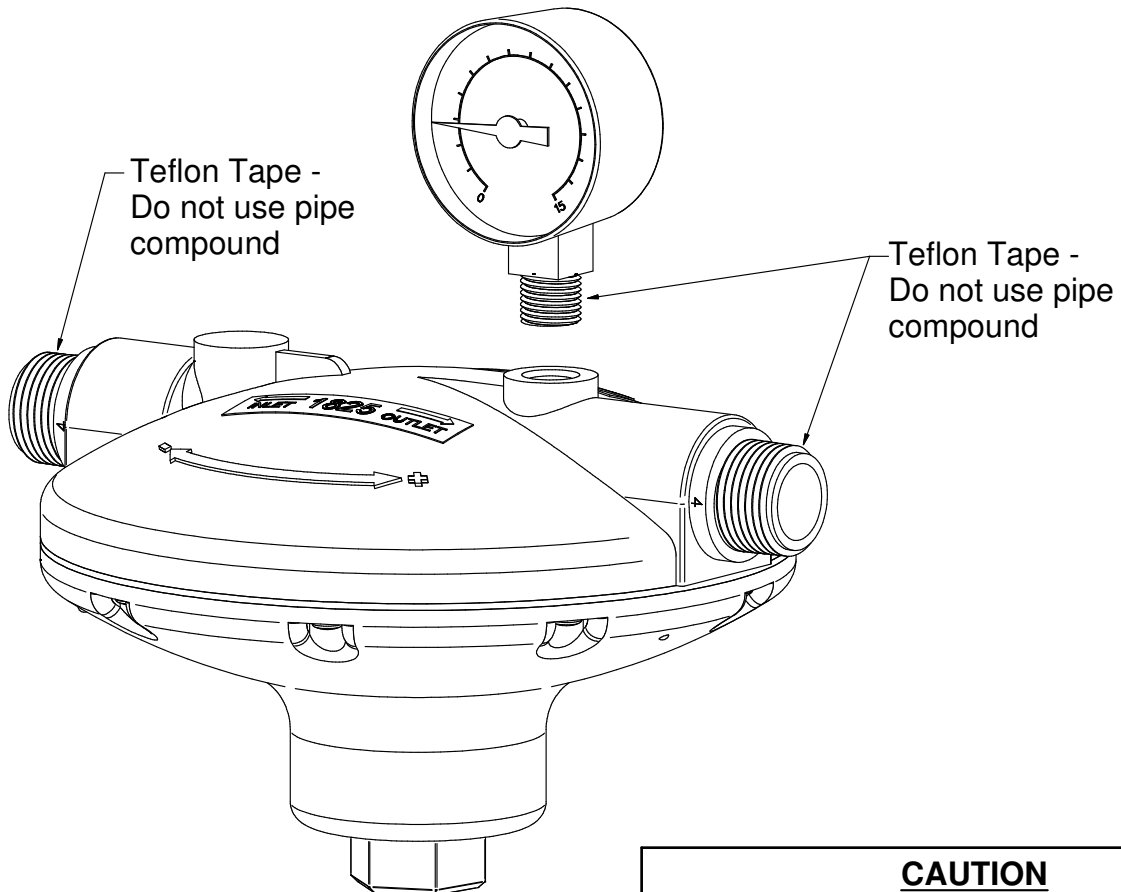
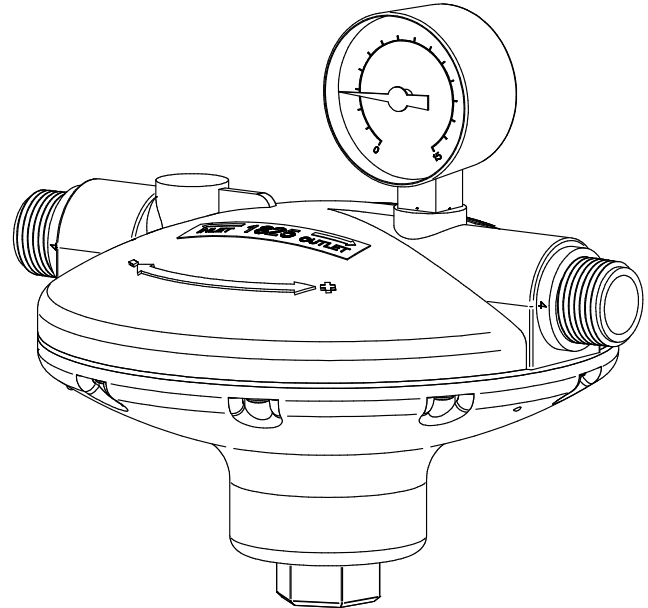


Assembly Instructions

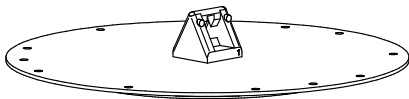
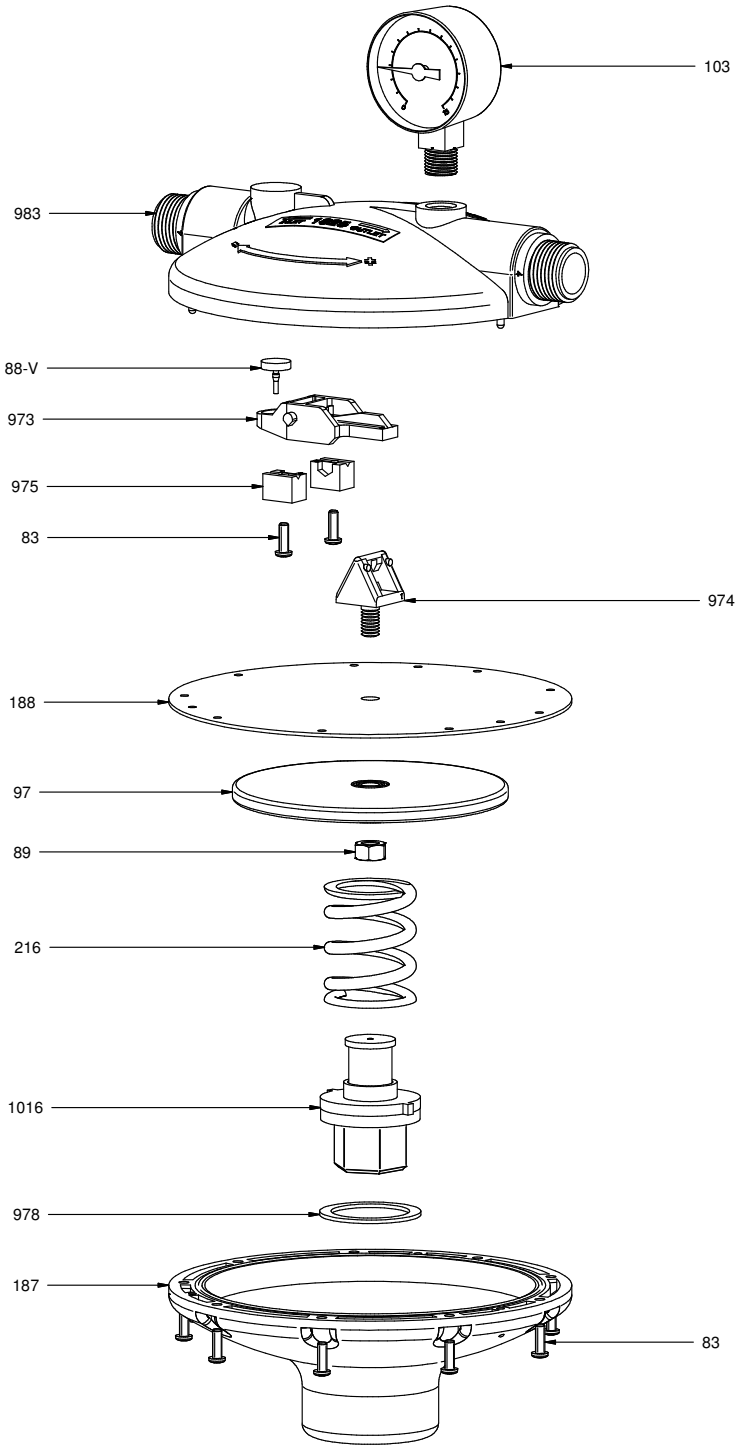


CAUTION

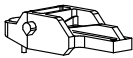
DO NOT ALLOW THIS ITEM TO COME INTO CONTACT WITH PETROLEUM, PHENOL OR ALDEHYDE BASED PRODUCTS OR ANY OTHER CORROSIVE PRODUCT IN GENERAL

COMPONENTS

| PART NR. | QTY | DESCRIPTION |
|----------|-----|---|
| 103 | 1 | PRESSURE GAUGE: 0 - 15 PSI / 0 - 1 BAR |
| 83 | 11 | FASTENER: SCREW PAN HD PHILLIPS #7 - 18 X 1/2" LG - PLASTITE THREAD |
| 187 | 1 | REGULATOR PART: ADJUSTMENT HOUSING - STANDARD & INLINE |
| 216 | 1 | REGULATOR PART: SPRING 3 - 10 PSI |
| 975 | 2 | REGULATOR PART: RETAINER BLOCK - INLINE |
| 978 | 1 | REGULATOR PART: ANTI-FRICTION RING - INLINE |
| 983 | 1 | REGULATOR PART: INLET/OUTLET HOUSING - INLINE 3/4" MNPT |
| 1016 | 1 | REGULATOR PART: ADJUSTMENT KNOB ASSEMBLY - INLINE |
| 88-V | 1 | REGULATOR PART: OPENING ARM SEAT |
| 973 | 1 | REGULATOR PART: OPENING ARM - INLINE W/O SEAT |
| 89 | 1 | FASTENER: NUT HEX 5/16"-18 X 1/2" WD X 17/64" H |
| 97 | 1 | REGULATOR PART: DIAPHRAGM BACKING PLATE - STANDARD |
| 188 | 1 | REGULATOR PART: DIAPHRAGM 3 - 10 PSI |
| 974 | 1 | REGULATOR PART: SHOULDER BOLT - MINI & INLINE |



2460 ASSEMBLY



1198 ASSEMBLY



P.O. Box 1169
 101 Industrial Parkway
 Middlebury, Indiana
 46540-1169, USA
 Tel: + 1 574.825.5849
 Fax: + 1 574.825.7674
 Web: www.ziggity.com