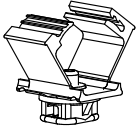


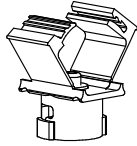
FOR THESE CLIP-ON SADDLE TYPES:

SCALE: 40%

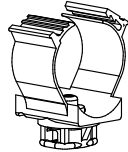
2390



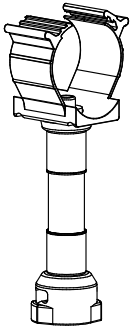
2389



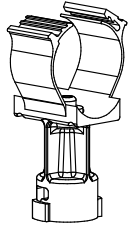
2386



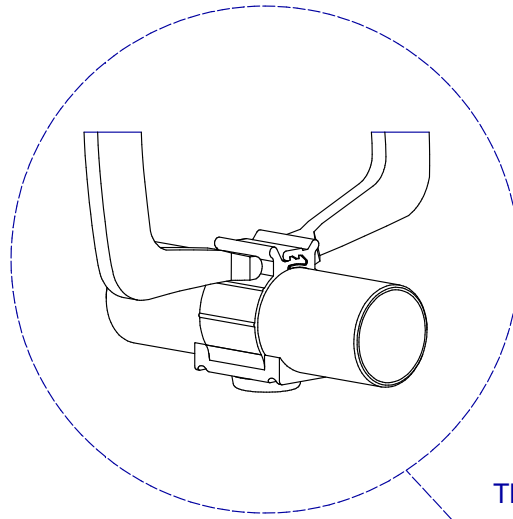
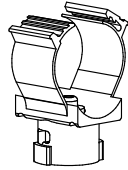
2822



2388

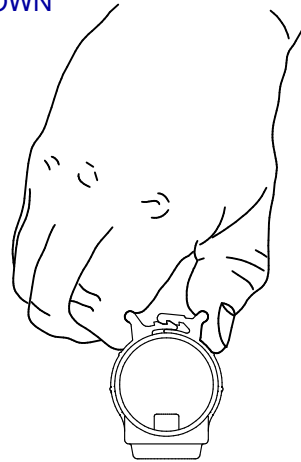


2385



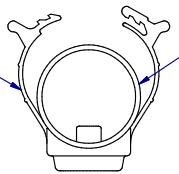
USE LARGE VISE-GRIP PLIER CLAMP (11R SHOWN) TO SQUEEZE THE CLIP UNTIL THE SECOND SNAP IS ENGAGED

SQUEEZE CLIP INTO ITS FIRST SNAP POSITION USING FINGERS AS SHOWN

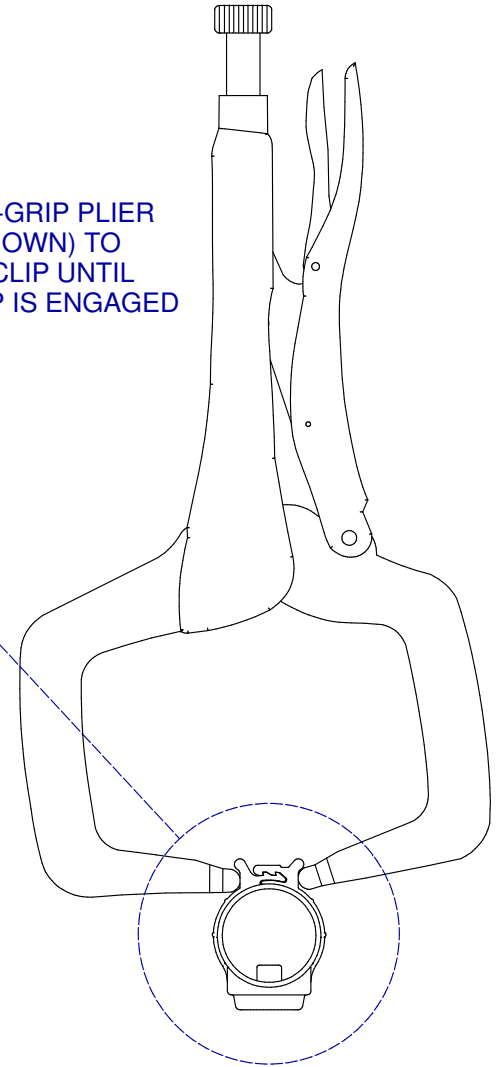
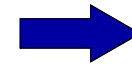
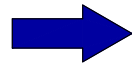


POSITION CLIP-ON SADDLE ONTO WATER PIPE

CLIP-ON SADDLE



WATER PIPE



INSTALLATION INSTRUCTIONS: CLIP-ON & ADAPTER SADDLES

PART NR.:

WWW.ZIGGITY.COM

DATE: 01-31-12

REVISION:

GL1079