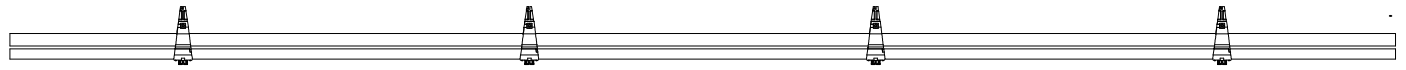
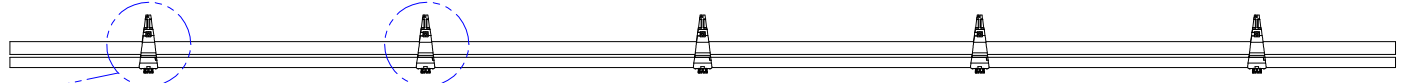


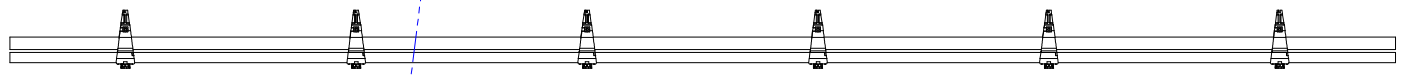
4 SADDLES



5 SADDLES



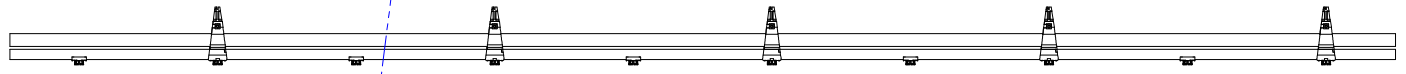
6 SADDLES



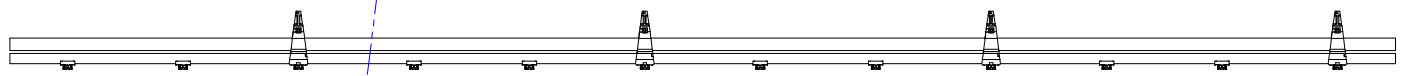
8 SADDLES



10 SADDLES



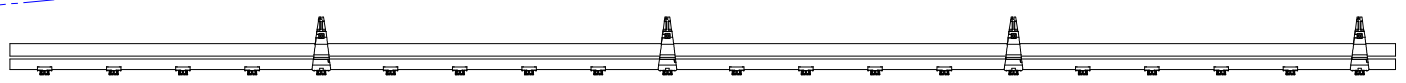
12 SADDLES



15 SADDLES



20 SADDLES



25 SADDLES



30 SADDLES



NOTES:

1.) ON EACH PIPE THE FS BRACKETS SHOULD BE MOUNTED IN BOTH DIRECTION



AKTIVE BRACKET PLACEMENT FOR 3 METER

PART NR.:

DATE: 9-6-01

REVISION: 1

GL1011