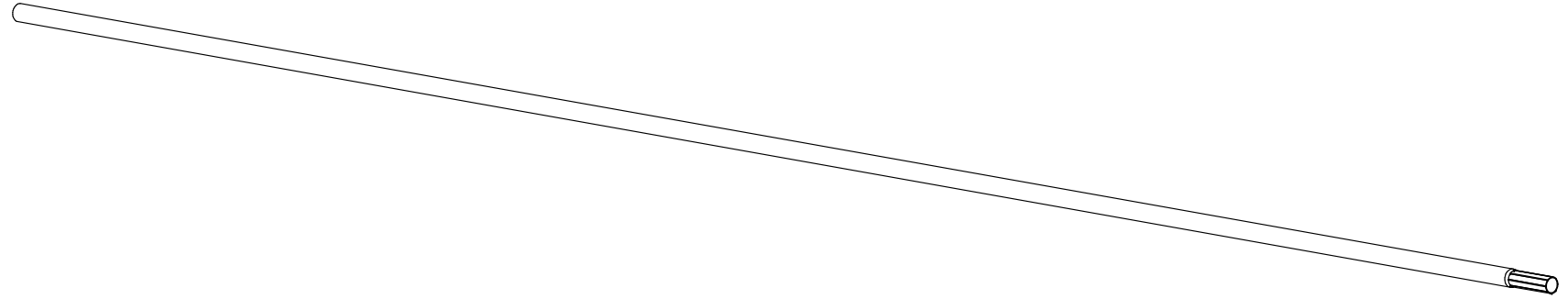
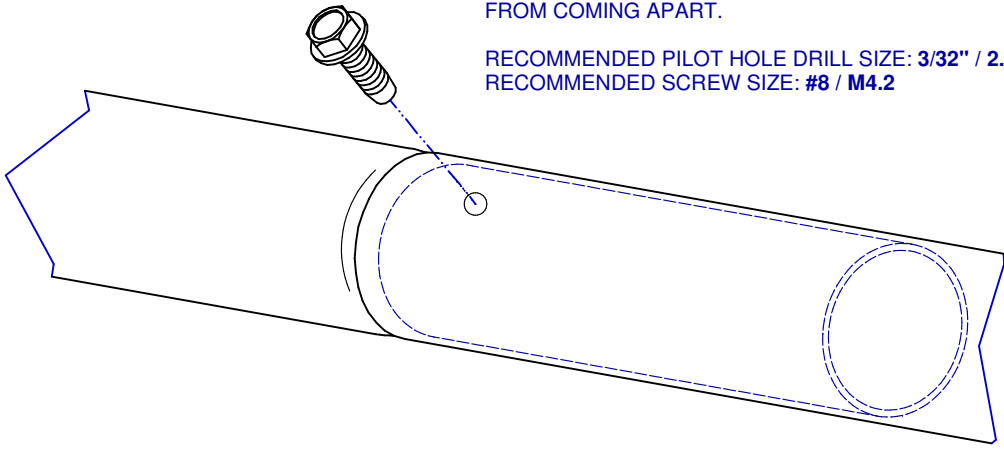


NOTES:
1.) TOTAL LENGTH OF CONDUIT = 123"
SWAGE LENGTH = 3"

IF NECESSARY A SELF-TAPPING SCREW CAN BE USED AT THE CONNECTION TO PREVENT THE PIPE FROM COMING APART.

RECOMMENDED PILOT HOLE DRILL SIZE: 3/32" / 2.5MM
RECOMMENDED SCREW SIZE: #8 / M4.2



SUPPORT PIPE: GALVANIZED 1.050" X 10 FT	
DATE: 03-28-01	REVISION: 5

PART NR.:
146