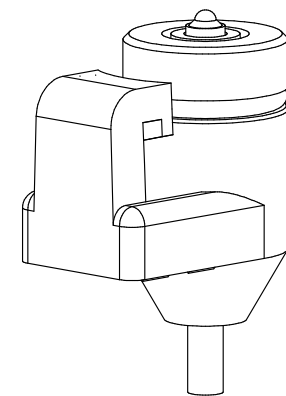


ITEM	PART NR.	QTY	DESCRIPTION
1	2637	1	DRINKER PART: CAP AKTIVE - RED
2	47-013	1	O-RING: 013 - 0.426" ID X 9/16" OD X 0.070" CS
3	2502	1	DRINKER PART: METERING PIN - ORANGE
4	114	1	DRINKER PART: BALL - 5/16" EPDM & SS DRINKERS
5	2634	1	DRINKER PART: TRIGGER PIN - FH
6	2647	1	DRINKER PART: BODY AKTIVE - LB



PLEASE NOTE: AKTIVE MAX8 DRINKER IS ONLY FOR COMMERCIAL LAYERS 18 WEEKS OF AGE AND OLDER.



DRINKER: AKTIVE MAX8		PART NR.:
DATE: 08-09-05	REVISION: 2	2641